

# Rawhiti Estate

A BEGROUP LIFESTYLE VILLAGE



## Rawhiti Estate

The interior design, fittings and features have been carefully selected to ensure that quality is paramount and befitting of this prime Remuera address.

Beautifully appointed apartments that exude luxury and warmth

Modern European appliances and fittings

Re-constituted stone kitchen benchtops and vanities

Modern open-plan and spacious living

Generous storage and wardrobes

Advanced and integrated TV, audio and communications system

High quality additional fittings that you would expect in Remuera, including a wine fridge, heat pump, underfloor heating to bathrooms, Zenith tap dispenser for boiling water and chilled filter water on demand, and a secure basement carpark and lockable storage unit to mention a few.

**Secure your apartment now by placing a \$9,000 totally refundable deposit.**

**For more information call Angus on 09 522 7001**

[www.rawhitiestate.co.nz](http://www.rawhitiestate.co.nz)

# Rawhiti Estate

A BEGROUP LIFESTYLE VILLAGE

## Weekly Fee

The following standard services are included in your weekly fee:

Rates and building insurance

Access to community facilities including heated swimming pool, spa pool, library, café, dining and lounge area, theatre, gym, activities room, hair dresser and other village activities.

General exterior maintenance including building washing and window washing

Gardening and landscaping

In addition, the following services have been included in your weekly fee at Rawhiti Estate:

The cost of power and water to your apartment

WIFI accessibility and charges

Telephone line rental

Weekly clean of your apartment

The provision of fresh towels changed daily

Provision of fresh sheets changed weekly

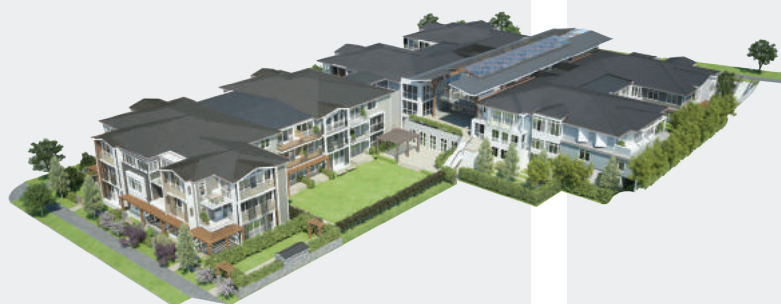
Morning and afternoon tea in the community centre

Access to 24 hour emergency service

Rubbish collection daily

Weekly appointment with a health professional (if required)

All of the above for a weekly fee of \$280.00

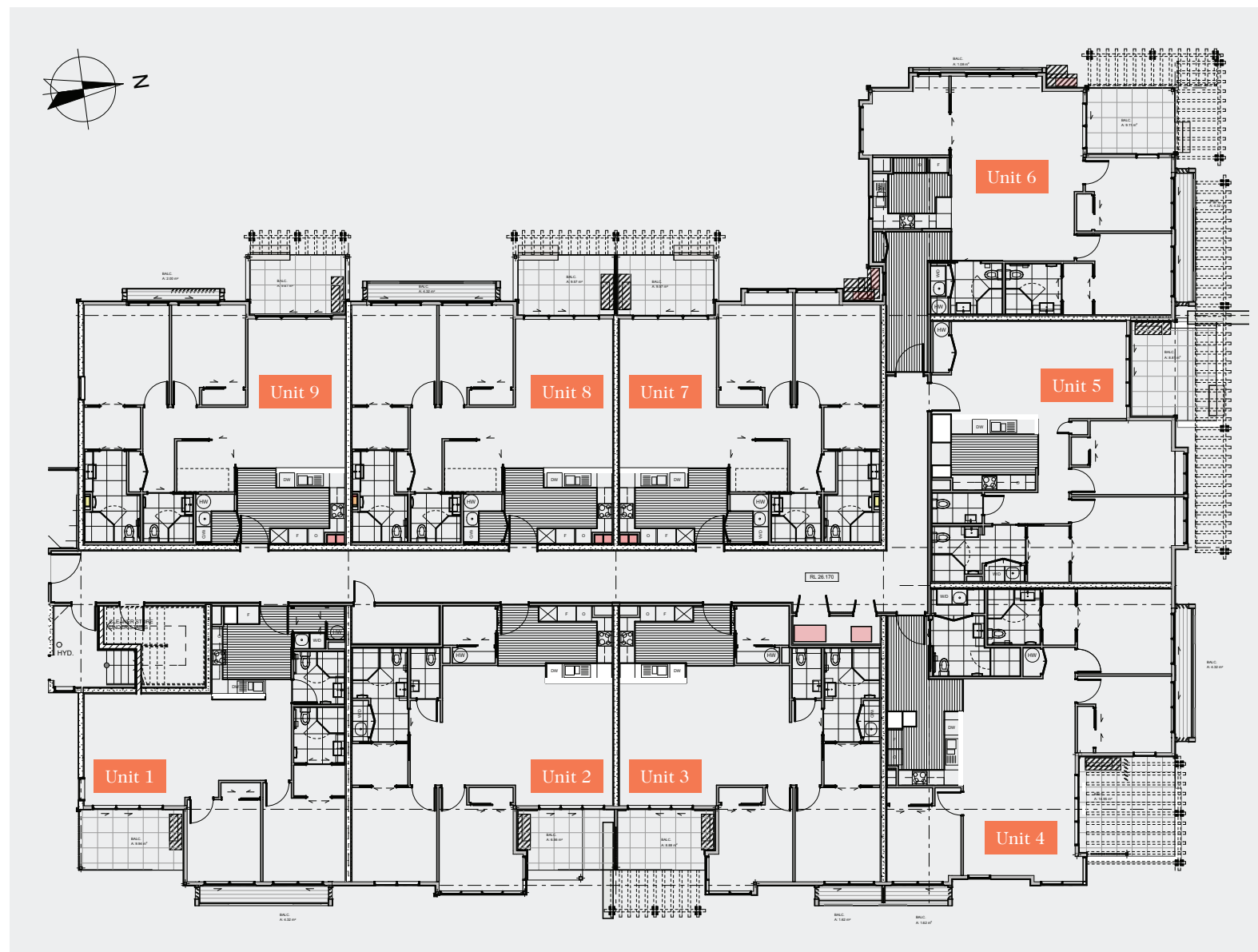


For more information call Angus on 09 522 7001

[www.rawhitiestate.co.nz](http://www.rawhitiestate.co.nz)

## Garden Ground Floor

Information: This apartment drawing has been produced prior to the completion of construction and is indicative only. BeGroup reserves the right to change or alter the building for construction or statutory authority requirements. Furniture shown is for illustrative purposes only and is not included with the apartments.



For more information call Angus on 09 522 7001

[www.rawhitiestate.co.nz](http://www.rawhitiestate.co.nz)

## Terrace

### Level 1

Information: This apartment drawing has been produced prior to the completion of construction and is indicative only. BeGroup reserves the right to change or alter the building for construction or statutory authority requirements. Furniture shown is for illustrative purposes only and is not included with the apartments.



For more information call Angus on 09 522 7001

[www.rawhitiestate.co.nz](http://www.rawhitiestate.co.nz)

## Vista Level 2

Information: This apartment drawing has been produced prior to the completion of construction and is indicative only. BeGroup reserves the right to change or alter the building for construction or statutory authority requirements. Furniture shown is for illustrative purposes only and is not included with the apartments.



For more information call Angus on 09 522 7001

[www.rawhitiestate.co.nz](http://www.rawhitiestate.co.nz)

## Two Bedroom

Units: 001 / 010 / 019

**Total Area: 96m<sup>2</sup>**

Apartment: 82m<sup>2</sup>

Deck: 10m<sup>2</sup>

Balcony: 4m<sup>2</sup>

Information: This apartment drawing has been produced prior to the completion of construction and is indicative only. BeGroup reserves the right to change or alter the building for construction or statutory authority requirements. Furniture shown is for illustrative purposes only and is not included with the apartments.



For more information call Angus on 09 522 7001

[www.rawhitiestate.co.nz](http://www.rawhitiestate.co.nz)



## Two Bedroom + Study

Units: 002 / 011

**Total Area: 102m<sup>2</sup>**

Apartment: 95m<sup>2</sup>

Deck: 7m<sup>2</sup>

Information: This apartment drawing has been produced prior to the completion of construction and is indicative only. BeGroup reserves the right to change or alter the building for construction or statutory authority requirements. Furniture shown is for illustrative purposes only and is not included with the apartments.



For more information call Angus on 09 522 7001

[www.rawhitiestate.co.nz](http://www.rawhitiestate.co.nz)

## Two Bedroom + Study

Units: 003 / 012

**Total Area: 106m<sup>2</sup>**

Apartment: 95m<sup>2</sup>

Deck: 9m<sup>2</sup>

Balcony: 2m<sup>2</sup>

Information: This apartment drawing has been produced prior to the completion of construction and is indicative only. BeGroup reserves the right to change or alter the building for construction or statutory authority requirements. Furniture shown is for illustrative purposes only and is not included with the apartments.



For more information call Angus on 09 522 7001

[www.rawhitiestate.co.nz](http://www.rawhitiestate.co.nz)



## Two Bedroom + Study

Unit: 020

**Total Area: 101m<sup>2</sup>**

Apartment: 94m<sup>2</sup>

Deck: 7m<sup>2</sup>

Information: This apartment drawing has been produced prior to the completion of construction and is indicative only. BeGroup reserves the right to change or alter the building for construction or statutory authority requirements. Furniture shown is for illustrative purposes only and is not included with the apartments.



For more information call Angus on 09 522 7001

[www.rawhitiestate.co.nz](http://www.rawhitiestate.co.nz)

## Two Bedroom + Study

Unit: 021

**Total Area: 105m<sup>2</sup>**

Apartment: 94m<sup>2</sup>

Deck: 9m<sup>2</sup>

Balcony: 2m<sup>2</sup>

Information: This apartment drawing has been produced prior to the completion of construction and is indicative only. BeGroup reserves the right to change or alter the building for construction or statutory authority requirements. Furniture shown is for illustrative purposes only and is not included with the apartments.



For more information call Angus on 09 522 7001

[www.rawhitiestate.co.nz](http://www.rawhitiestate.co.nz)



## Three Bedroom

Unit: 004

**Total Area: 128m<sup>2</sup>**

Apartment: 107m<sup>2</sup>

Deck: 15m<sup>2</sup>

Balcony 1: 4m<sup>2</sup>

Balcony 2: 2m<sup>2</sup>

Information: This apartment drawing has been produced prior to the completion of construction and is indicative only. BeGroup reserves the right to change or alter the building for construction or statutory authority requirements. Furniture shown is for illustrative purposes only and is not included with the apartments.



For more information call Angus on 09 522 7001

[www.rawhitiestate.co.nz](http://www.rawhitiestate.co.nz)

## Three Bedroom

Unit: 013

**Total Area: 121m<sup>2</sup>**

Apartment: 107m<sup>2</sup>

Deck: 8m<sup>2</sup>

Balcony 1: 4m<sup>2</sup>

Balcony 2: 2m<sup>2</sup>

Information: This apartment drawing has been produced prior to the completion of construction and is indicative only. BeGroup reserves the right to change or alter the building for construction or statutory authority requirements. Furniture shown is for illustrative purposes only and is not included with the apartments.



For more information call Angus on 09 522 7001

[www.rawhitiestate.co.nz](http://www.rawhitiestate.co.nz)



## Three Bedroom

Unit: 022

**Total Area: 122m<sup>2</sup>**

Apartment: 108m<sup>2</sup>

Deck: 8m<sup>2</sup>

Balcony 1: 4m<sup>2</sup>

Balcony 2: 2m<sup>2</sup>

Information: This apartment drawing has been produced prior to the completion of construction and is indicative only. BeGroup reserves the right to change or alter the building for construction or statutory authority requirements. Furniture shown is for illustrative purposes only and is not included with the apartments.



For more information call Angus on 09 522 7001

[www.rawhitiestate.co.nz](http://www.rawhitiestate.co.nz)

## Two Bedroom

Unit: 014

**Total Area: 101m<sup>2</sup>**

Apartment: 92m<sup>2</sup>

Deck: 9m<sup>2</sup>

Information: This apartment drawing has been produced prior to the completion of construction and is indicative only. BeGroup reserves the right to change or alter the building for construction or statutory authority requirements. Furniture shown is for illustrative purposes only and is not included with the apartments.



For more information call Angus on 09 522 7001

[www.rawhitiestate.co.nz](http://www.rawhitiestate.co.nz)



## Two Bedroom

Unit: 005

**Total Area: 101m<sup>2</sup>**

Apartment: 92m<sup>2</sup>

Deck: 9m<sup>2</sup>

Information: This apartment drawing has been produced prior to the completion of construction and is indicative only. BeGroup reserves the right to change or alter the building for construction or statutory authority requirements. Furniture shown is for illustrative purposes only and is not included with the apartments.



For more information call Angus on 09 522 7001

[www.rawhitiestate.co.nz](http://www.rawhitiestate.co.nz)

## Two Bedroom

Unit: 023

**Total Area: 99m<sup>2</sup>**

Apartment: 90m<sup>2</sup>

Deck: 9m<sup>2</sup>

Information: This apartment drawing has been produced prior to the completion of construction and is indicative only. BeGroup reserves the right to change or alter the building for construction or statutory authority requirements. Furniture shown is for illustrative purposes only and is not included with the apartments.



For more information call Angus on 09 522 7001

[www.rawhitiestate.co.nz](http://www.rawhitiestate.co.nz)



## Three Bedroom

**Unit: 015**

**Total Area: 114m<sup>2</sup>**

Apartment: 101m<sup>2</sup>

Deck: 9m<sup>2</sup>

Balcony: 4m<sup>2</sup>

Information: This apartment drawing has been produced prior to the completion of construction and is indicative only. BeGroup reserves the right to change or alter the building for construction or statutory authority requirements. Furniture shown is for illustrative purposes only and is not included with the apartments.



For more information call Angus on 09 522 7001

[www.rawhitiestate.co.nz](http://www.rawhitiestate.co.nz)

## Three Bedroom

Unit: 006

**Total Area: 111m<sup>2</sup>**

Apartment: 101m<sup>2</sup>

Deck: 9m<sup>2</sup>

Balcony: 1m<sup>2</sup>

Information: This apartment drawing has been produced prior to the completion of construction and is indicative only. BeGroup reserves the right to change or alter the building for construction or statutory authority requirements. Furniture shown is for illustrative purposes only and is not included with the apartments.



For more information call Angus on 09 522 7001

[www.rawhitiestate.co.nz](http://www.rawhitiestate.co.nz)



## Three Bedroom

Unit: 024

**Total Area: 113m<sup>2</sup>**

Apartment: 100m<sup>2</sup>

Deck: 9m<sup>2</sup>

Balcony: 4m<sup>2</sup>

Information: This apartment drawing has been produced prior to the completion of construction and is indicative only. BeGroup reserves the right to change or alter the building for construction or statutory authority requirements. Furniture shown is for illustrative purposes only and is not included with the apartments.



For more information call Angus on 09 522 7001

[www.rawhitiestate.co.nz](http://www.rawhitiestate.co.nz)

## Two Bedroom + Study

Units: 007 / 016

**Total Area: 106m<sup>2</sup>**

Apartment: 96m<sup>2</sup>

Deck: 10m<sup>2</sup>

Information: This apartment drawing has been produced prior to the completion of construction and is indicative only. BeGroup reserves the right to change or alter the building for construction or statutory authority requirements. Furniture shown is for illustrative purposes only and is not included with the apartments.



For more information call Angus on 09 522 7001

[www.rawhitiestate.co.nz](http://www.rawhitiestate.co.nz)



## Two Bedroom + Study

Units: 008 / 017

**Total Area: 108m<sup>2</sup>**

Apartment: 94m<sup>2</sup>

Deck: 10m<sup>2</sup>

Balcony: 4m<sup>2</sup>

Information: This apartment drawing has been produced prior to the completion of construction and is indicative only. BeGroup reserves the right to change or alter the building for construction or statutory authority requirements. Furniture shown is for illustrative purposes only and is not included with the apartments.



For more information call Angus on 09 522 7001

[www.rawhitiestate.co.nz](http://www.rawhitiestate.co.nz)

## Two Bedroom + Study

Unit: 026

**Total Area: 109m<sup>2</sup>**

Apartment: 95m<sup>2</sup>

Deck: 10m<sup>2</sup>

Balcony: 4m<sup>2</sup>

Information: This apartment drawing has been produced prior to the completion of construction and is indicative only. BeGroup reserves the right to change or alter the building for construction or statutory authority requirements. Furniture shown is for illustrative purposes only and is not included with the apartments.



For more information call Angus on 09 522 7001

[www.rawhitiestate.co.nz](http://www.rawhitiestate.co.nz)

## Two Bedroom + Study

Units: 009 / 018

**Total Area: 106m<sup>2</sup>**

Apartment: 94m<sup>2</sup>

Deck: 10m<sup>2</sup>

Balcony: 2m<sup>2</sup>

Information: This apartment drawing has been produced prior to the completion of construction and is indicative only. BeGroup reserves the right to change or alter the building for construction or statutory authority requirements. Furniture shown is for illustrative purposes only and is not included with the apartments.



For more information call Angus on 09 522 7001

[www.rawhitiestate.co.nz](http://www.rawhitiestate.co.nz)



## Two Bedroom + Study

Unit: 025

**Total Area: 106m<sup>2</sup>**

Apartment: 96m<sup>2</sup>

Deck: 10m<sup>2</sup>

Information: This apartment drawing has been produced prior to the completion of construction and is indicative only. BeGroup reserves the right to change or alter the building for construction or statutory authority requirements. Furniture shown is for illustrative purposes only and is not included with the apartments.



For more information call Angus on 09 522 7001

[www.rawhitiestate.co.nz](http://www.rawhitiestate.co.nz)



## Two Bedroom + Study

Unit: 027

**Total Area: 106m<sup>2</sup>**

Apartment: 96m<sup>2</sup>

Deck: 10m<sup>2</sup>

Information: This apartment drawing has been produced prior to the completion of construction and is indicative only. BeGroup reserves the right to change or alter the building for construction or statutory authority requirements. Furniture shown is for illustrative purposes only and is not included with the apartments.



For more information call Angus on 09 522 7001

[www.rawhitiestate.co.nz](http://www.rawhitiestate.co.nz)